

MATERIALIEN
UND FARBEN

MATERIALS
AND COLOURS



2020 – 2021



INHALT / CONTENTS

MATERIALIEN UND FARBEN / MATERIALS AND COLOURS

MASSIVHÖLZER / SOLID WOOD
FURNIERTES SCHICHTHOLZ, FARBIG LACKIERT / VENEERED PLYWOOD, COLOUR LACQUERED
MARMOR / MARBLE
LACKIERUNGEN, PULVERBESCHICHTUNGEN / LACQUERS, POWDER-COATINGS
GLAS / GLASS
METALLE / METALS
THEBAN, KARNAK, ASWAN
STUTT GART
KELIM IZA IN WOLLE / KILIM IZA IN WOOL
KELIM ZET IN WOLLE / KILIM ZET IN WOOL
TEPPICH KAVIR, HANDGEKNÜPFTE WOLLE / CARPET KAVIR, HAND-KNOTTED WOOL
DECKE TRAMATO IN KASCHMIR, WOLLE (AUSLAUFMODELL) / BLANKET TRAMATO IN CASHMERE, WOOL (DISCONTINUED MODEL)
DECKE RETE IN KASCHMIR, WOLLE / BLANKET RETE IN CASHMERE, WOOL
DECKE DOTTO IN WOLLE, BAUMWOLLE / BLANKET DOTTO IN WOOL, COTTON
DECKE CUADRO IN MERINOWOLLE / BLANKET CUADRO IN MERINO WOOL

STOFFE / FABRICS

2	FIELD (STOFFGRUPPE B / FABRIC GROUP B)	11
	BRASILIA (STOFFGRUPPE B / FABRIC GROUP B)	12
3	LOUPO (STOFFGRUPPE B / FABRIC GROUP B)	12
4	PARIS TEXAS (STOFFGRUPPE B / FABRIC GROUP B)	13
	ANTWERP (STOFFGRUPPE B / FABRIC GROUP B)	14
5	SIERRA (STOFFGRUPPE B / FABRIC GROUP B)	14
6	LAMA (STOFFGRUPPE B / FABRIC GROUP B)	15
7	INTRECCIO (STOFFGRUPPE D / FABRIC GROUP D)	15
8	REMIX (STOFFGRUPPE C / FABRIC GROUP C)	16
8	ATOM (STOFFGRUPPE D / FABRIC GROUP D)	17
8	ZANZIBAR (STOFFGRUPPE D / FABRIC GROUP D)	18
8	BYRAM (STOFFGRUPPE D / FABRIC GROUP D)	18
	MASAI (STOFFGRUPPE D / FABRIC GROUP D)	19
9	TARTAN (STOFFGRUPPE D / FABRIC GROUP D)	20
	VIDAR (STOFFGRUPPE D / FABRIC GROUP D)	21
10	BALBOA (STOFFGRUPPE D / FABRIC GROUP D)	22
	SUNNIVA (STOFFGRUPPE D / FABRIC GROUP D)	23
10	HELIA (STOFFGRUPPE E / FABRIC GROUP E)	24
	LEDER / LEATHER	
10	LEDER SELECT (STOFFGRUPPE E / FABRIC GROUP E)	25
	LEDER RANCHERO (STOFFGRUPPE F / FABRIC GROUP F)	26
10	VELOURLEDER / SUEDE (STOFFGRUPPE E / FABRIC GROUP E)	26

MATERIALIEN UND FARBEN / MATERIALS AND COLOURS

MASSIVHÖLZER / SOLID WOOD



EUROPÄISCHE EICHE, GEÖLT /
EUROPEAN OAK, OILED



EUROPÄISCHE EICHE, GEWACHST /
EUROPEAN OAK, WAXED



EUROPÄISCHE EICHE, UNBEHANDELT /
EUROPEAN OAK, UNTREATED



EUROPÄISCHER NUSSBAUM, GEÖLT /
EUROPEAN WALNUT, OILED



EUROPÄISCHER NUSSBAUM, GEWACHST /
EUROPEAN WALNUT, WAXED



EUROP. EICHE, WEISS PIGMENTIERT,
GEWACHST /
EUROP. OAK, WHITE PIGMENTED, WAXED



EUROP. EICHE, SIGNALWEISS GEBEIZT, LACKIERT /
EUROP. OAK, SIGNAL WHITE STAINED, LACQUERED



EUROP. EICHE, TIEFSCHWARZ GEBEIZT, LACKIERT /
EUROP. OAK, JET BLACK STAINED, LACQUERED

MATERIALIEN UND FARBEN / MATERIALS AND COLOURS

FURNIERTES SCHICHTHOLZ, FARBIG LACKIERT / VENEERED PLYWOOD, COLOUR LACQUERED



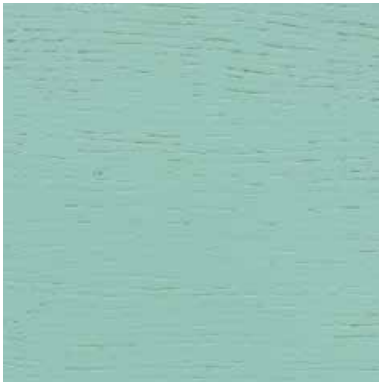
EICHENFURNIER, KLAR LACKIERT /
OAK VENEER, CLEAR LACQUERED



EICHENFURNIER, SIGNALWEISS LACKIERT /
OAK VENEER, SIGNAL WHITE LACQUERED



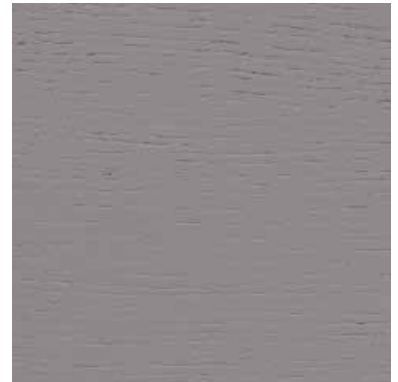
EICHENFURNIER, SEIDENGRAU LACKIERT /
OAK VENEER, SILK GREY LACQUERED



EICHENFURNIER, MINT LACKIERT /
OAK VENEER, MINT LACQUERED



EICHENFURNIER, TIEFSCHWARZ LACKIERT /
OAK VENEER, JET BLACK LACQUERED



EICHENFURNIER, VERKEHRSGRAU LACKIERT /
OAK VENEER, TRAFFIC GREY LACQUERED



EICHENFURNIER, NEONROT LACKIERT /
OAK VENEER, NEON RED LACQUERED

MATERIALIEN UND FARBEN / MATERIALS AND COLOURS

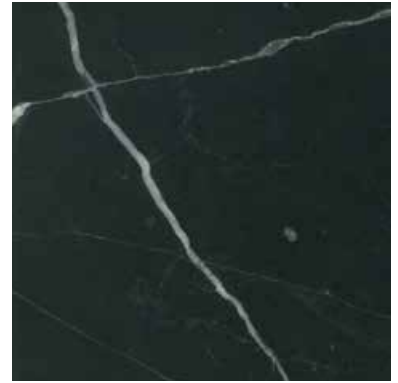
MARMOR / MARBLE



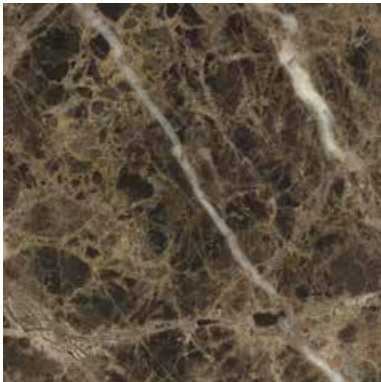
BIANCO CARRARA, GEÖLT / OILED



GREY BARDIGLIO, GEÖLT / OILED



NERO MARQUINA, GEÖLT / OILED



DARK EMPERADOR, GEÖLT / OILED



VERDE VANEKA, GEÖLT / OILED

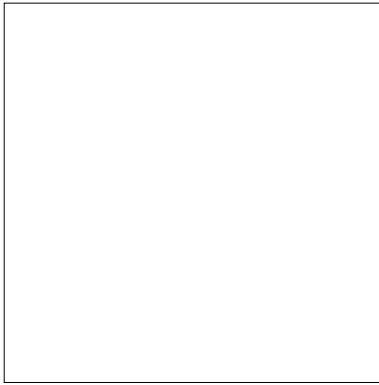
TRAVERTIN / TRAVERTINE



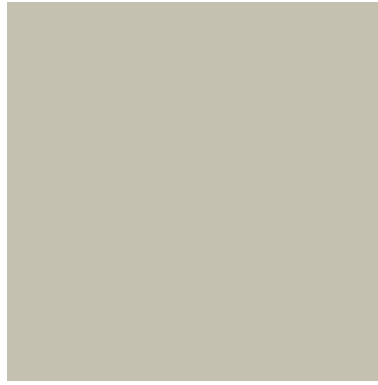
TRAVERTIN, UNGEFÜLLT /
TRAVERTINE, UNFILLED

MATERIALIEN UND FARBEN / MATERIALS AND COLOURS

LACKIERUNGEN, PULVERBESCHICHTUNGEN / LACQUERS, POWDER-COATINGS



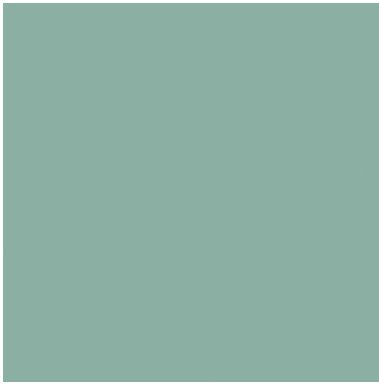
SIGNALWEISS /
SIGNAL WHITE



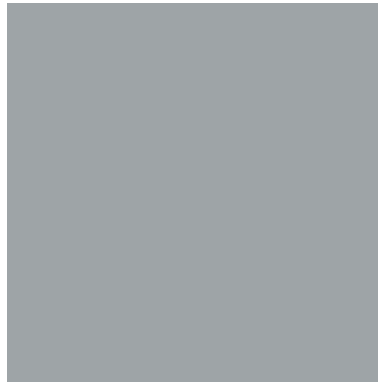
SEIDENGRAU /
SILK GREY



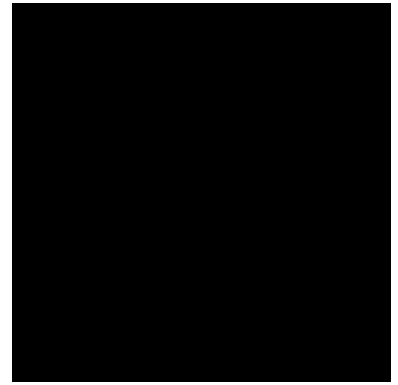
REINORANGE /
PURE ORANGE



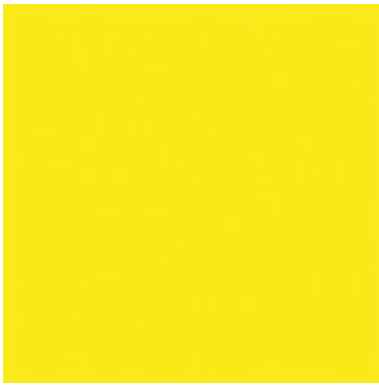
MINT /
MINT



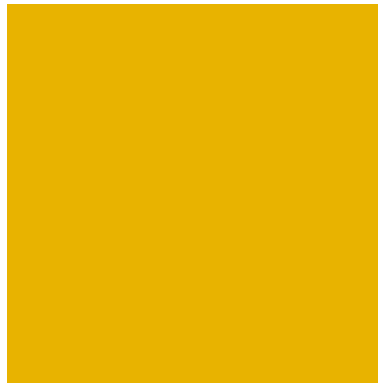
VERKEHRSGRAU /
TRAFFIC GREY



TIEFSCHWARZ /
JET BLACK



SCHWEFELGELB /
SULFUR YELLOW



HONIGGELB /
HONEY YELLOW



BEIGEROT /
BEIGE RED



FLAME /
FLAME



NEONROT /
NEON RED

MATERIALIEN UND FARBEN / MATERIALS AND COLOURS

GLAS / GLASS



GLAS, DURCHGEFÄRBT, RAUCHGRAU /
GLASS, SOLID COLOURED, SMOKE GREY



GLAS, DURCHGEFÄRBT, DUNKELBLAU /
GLASS, SOLID COLOURED, DARK BLUE



GLAS, DURCHGEFÄRBT, BRAUN /
GLASS, SOLID COLOURED, BROWN



FOLIENVERBUNDGLAS, BLAU /
LAMINATED GLASS, BLUE



FOLIENVERBUNDGLAS, ROSÉ /
LAMINATED GLASS, ROSÉ

MATERIALIEN UND FARBEN / MATERIALS AND COLOURS

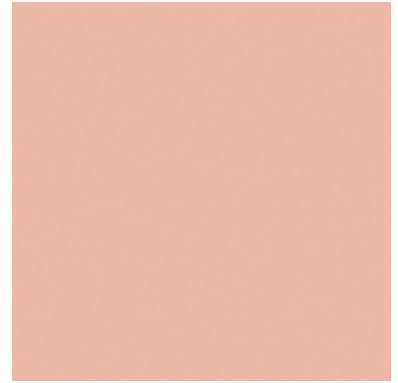
METALLE / METALS



EDELSTAHL, POLIERT /
STAINLESS STEEL, POLISHED



MESSING, POLIERT /
BRASS, POLISHED



KUPFER, POLIERT /
COPPER, POLISHED



EDELSTAHL, GESCHLIFFEN /
STAINLESS STEEL, BRUSHED



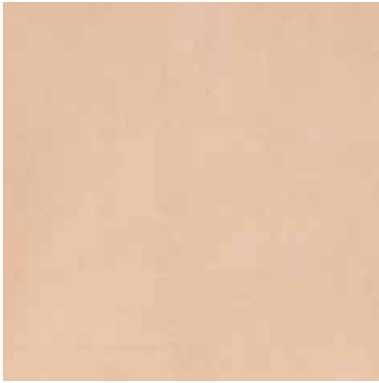
MESSING, GESCHLIFFEN, LACKIERT /
BRASS, BRUSHED, LACQUERED



STAHL, GELB VERZINKT /
STEEL, YELLOW ZINC-PLATED

MATERIALIEN UND FARBEN / MATERIALS AND COLOURS

THEBAN, KARNAK, ASWAN



BLANKLEDER, NATUR /
SMOOTH LEATHER, NATURAL,

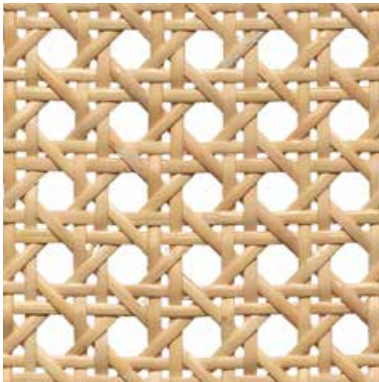


BLANKLEDER, MOCCA /
SMOOTH LEATHER, MOCCA



LEINENGURT, GEWEBT, ROHGRAU /
TEXTILE BAND, WOVEN, RAW GREY

STUTTGART



WIENER GEFLECHT /
VIENNA WEAVE

KELIM IZA IN WOLLE / KILIM IZA IN WOOL



SCHWARZ, WEISS /
BLACK, WHITE



SCHWARZ, QUARZGRAU /
BLACK, QUARTZ GREY

KELIM ZET IN WOLLE / KILIM ZET IN WOOL



GRAU /
GREY



BLAU /
BLUE



ROT /
RED

MATERIALIEN UND FARBEN / MATERIALS AND COLOURS

TEPPICH KAVIR, HANDGEKNÜPFTE WOLLE / CARPET KAVIR, HAND-KNOTTED WOOL



SEIDENGRAU, FRANSEN NATUR /
SILK GRAY, FRINGES NATURAL



GRAPHITGRAU, FRANSEN SCHIEFERGRAU /
GRAPHITE GREY, FRINGES SLATE GREY



SCHWARZGRAU, FRANSEN SCHIEFERGRAU /
BLACK GREY, FRINGES SLATE GREY



ALTROSA, FRANSEN LEUCHTROT /
ANTIQUÉ PINK, FRINGES LUMINOUS RED



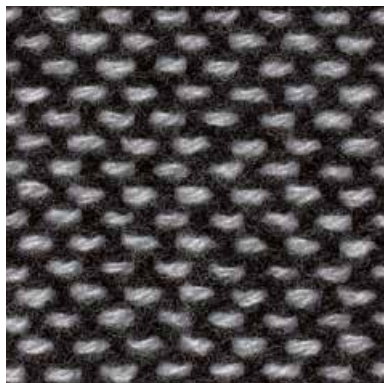
TAUPE, FRANSEN SENFGELB /
TAUPE, FRINGES MUSTARD YELLOW



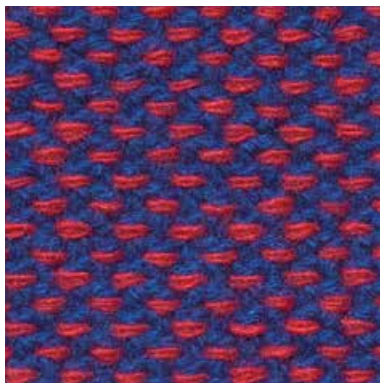
HELLE MINZE, FRANSEN TÜRKISBLAU /
PALE MINT, FRINGES TURQUOISE BLUE

MATERIALIEN UND FARBEN / MATERIALS AND COLOURS

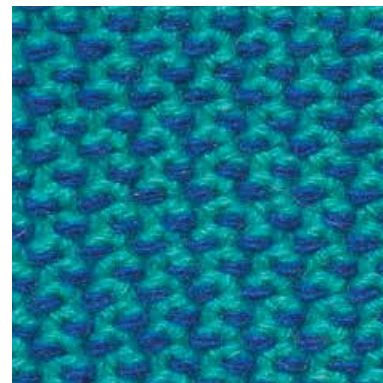
DECKE TRAMATO IN KASCHMIR, WOLLE (AUSLAUFMODELL) / BLANKET TRAMATO IN CASHMERE, WOOL (DISCONTINUED MODEL)



BLACK: KOHLEFARBEN MIT WEISS /
BLACK: CHARCOAL WITH WHITE



ROYAL: BLAU MIT PINK /
ROYAL: BLUE WITH PINK



TURCHESE: MINTFARBEN MIT BLAU /
TURCHESE: MINT WITH BLUE

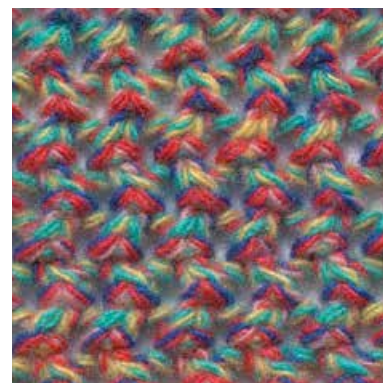
DECKE RETE IN KASCHMIR, WOLLE / BLANKET RETE IN CASHMERE, WOOL



CITY: GRAUTÖNE /
CITY: SHADES OF GREY



INCHIOSTRO: MINTFARBEN, NAVY, WEISS /
INCHIOSTRO: MINT, NAVY, WHITE



CALIPSO: PINK, MINTFARBEN, BLAU, GELB /
CALIPSO: PINK, MINT, BLUE, YELLOW

DECKE DOTTO IN WOLLE, BAUMWOLLE / BLANKET DOTTO IN WOOL, COTTON



SCHWARZ / BLACK



ROT / RED

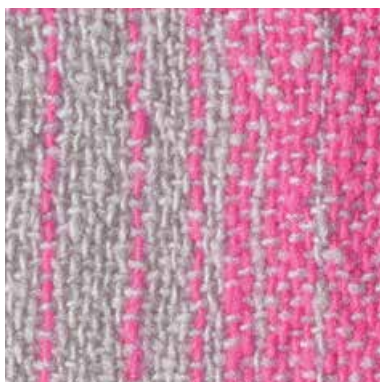


BLAU / BLUE

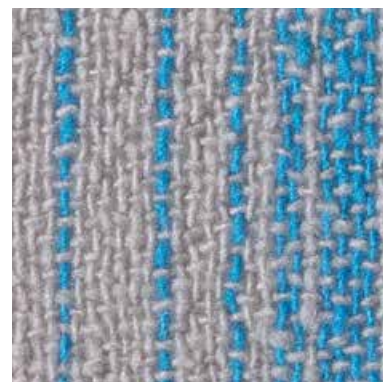
DECKE CUADRO IN MERINOWOLLE / BLANKET CUADRO IN MERINO WOOL



GELB / YELLOW



PINK / PINK



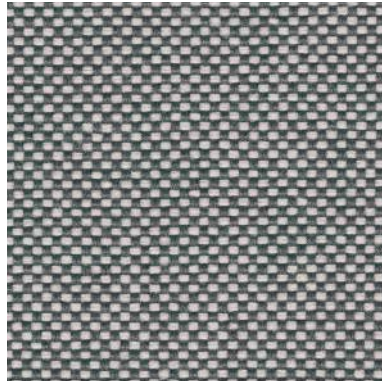
BLAU / BLUE

STOFFE / FABRICS

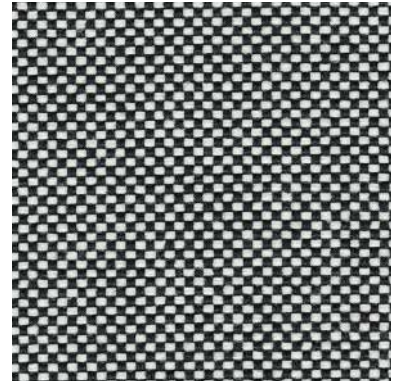
FIELD (STOFFGRUPPE B / FABRIC GROUP B) 100% TREVIRA CS /TREVIRA CS



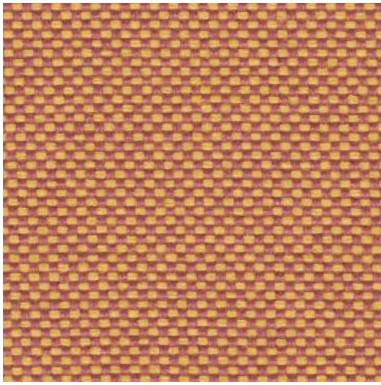
FIELD, SILK GREY 123



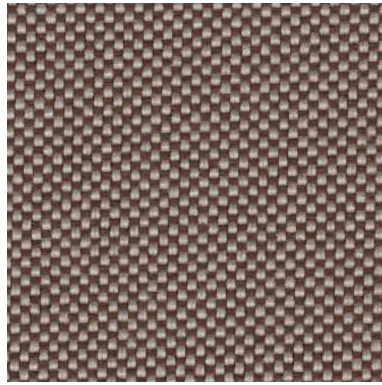
FIELD, STONE 132



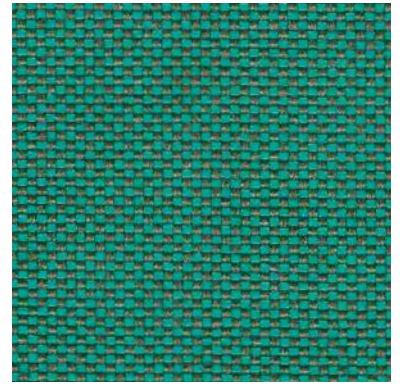
FIELD, CHESS 142



FIELD, GOLD 443



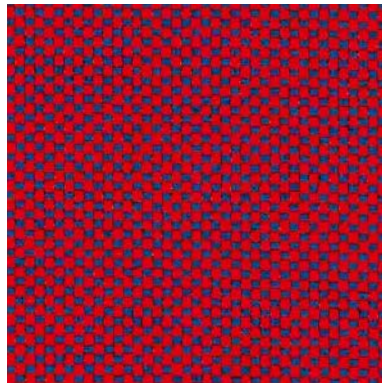
FIELD, EARTH 343



FIELD, EMERALD 963



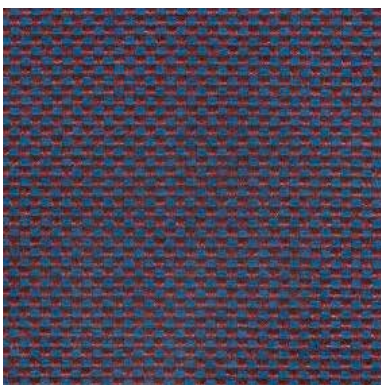
FIELD, ROSE 623



FIELD, CHERRY 673



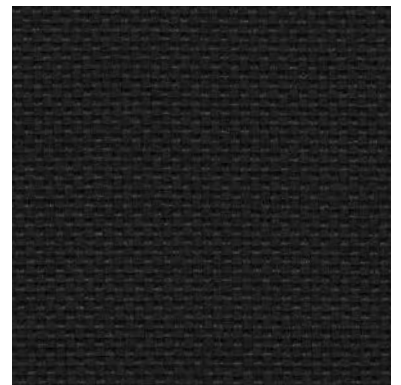
FIELD, GRAPHITE 182



FIELD, PLUM 773



FIELD, MIDNIGHT 782



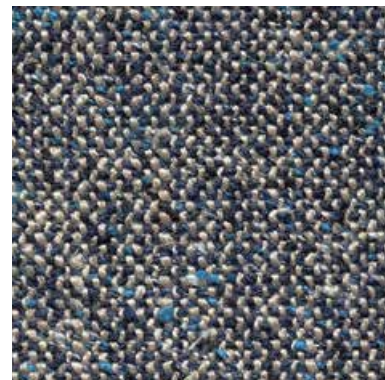
FIELD, BLACK 192

STOFFE / FABRICS

BRASILIA (STOFFGRUPPE B / FABRIC GROUP B) 23% LEINEN / LINEN, 20% BAUMWOLLE / COTTON, 20% WOLLE / WOOL, 19% POLYAMID / POLYAMIDE, 11% SEIDE / SILK, 7% BAMBUS / BAMBOO



BRASILIA, MULTI



BRASILIA, AZUL



BRASILIA, NERO

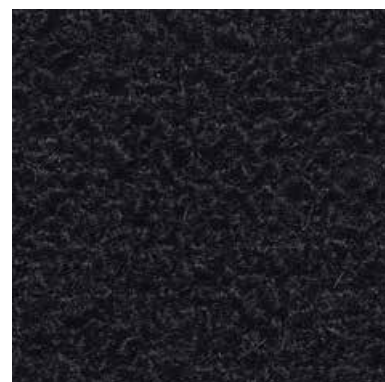
LOUPO (STOFFGRUPPE B / FABRIC GROUP B) 36% WOLLE / WOOL, 34% BAUMWOLLE / COTTON, 22% VISKOSE / VISCOSE, 8% POLYESTER / POLYESTER



LOUPO, BALTIC



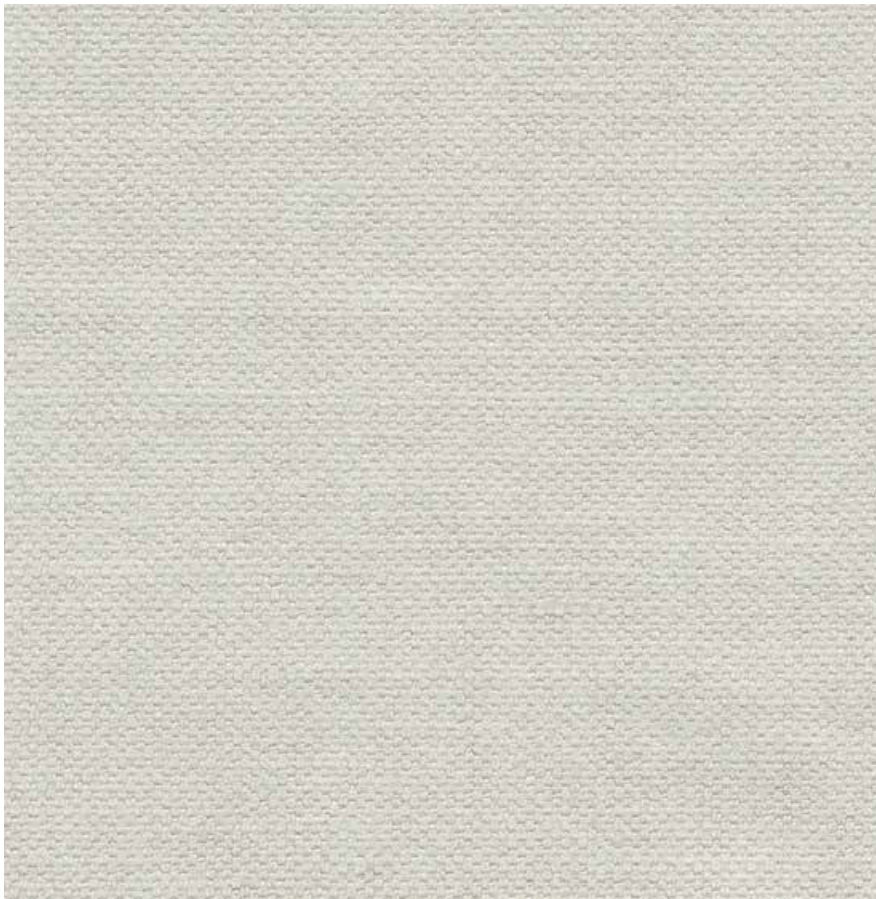
LOUPO, CHARCOAL



LOUPO, BLACK

STOFFE / FABRICS

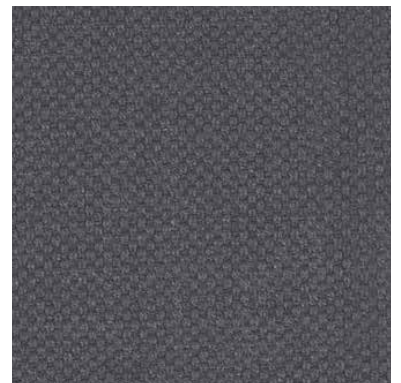
PARIS TEXAS (STOFFGRUPPE B / FABRIC GROUP B) 63% BAUMWOLLE / COTTON, 37% LEINEN / LINEN



PARIS TEXAS, STERLING 9922



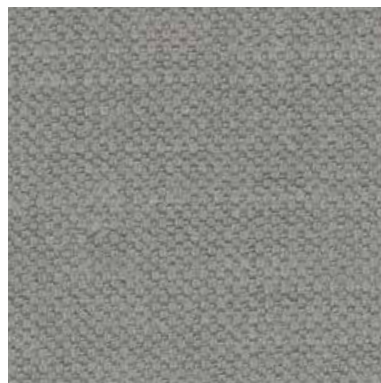
PARIS TEXAS, DIJON 50298



PARIS TEXAS, CARBON 2049



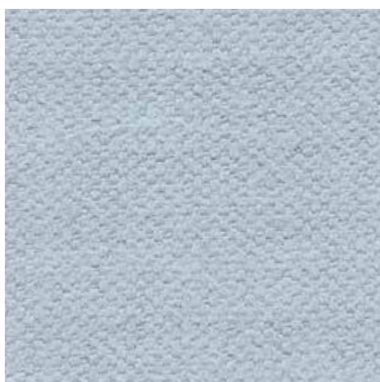
PARIS TEXAS, SAND 0594



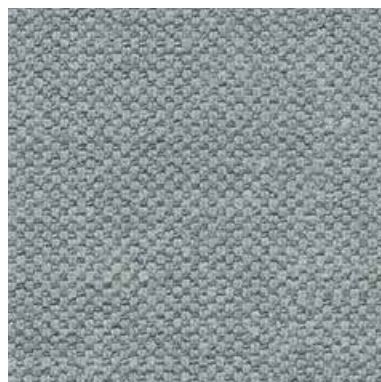
PARIS TEXAS, SMOKE 7568



PARIS TEXAS, ESPRESSO 1044



PARIS TEXAS, SKY 3487



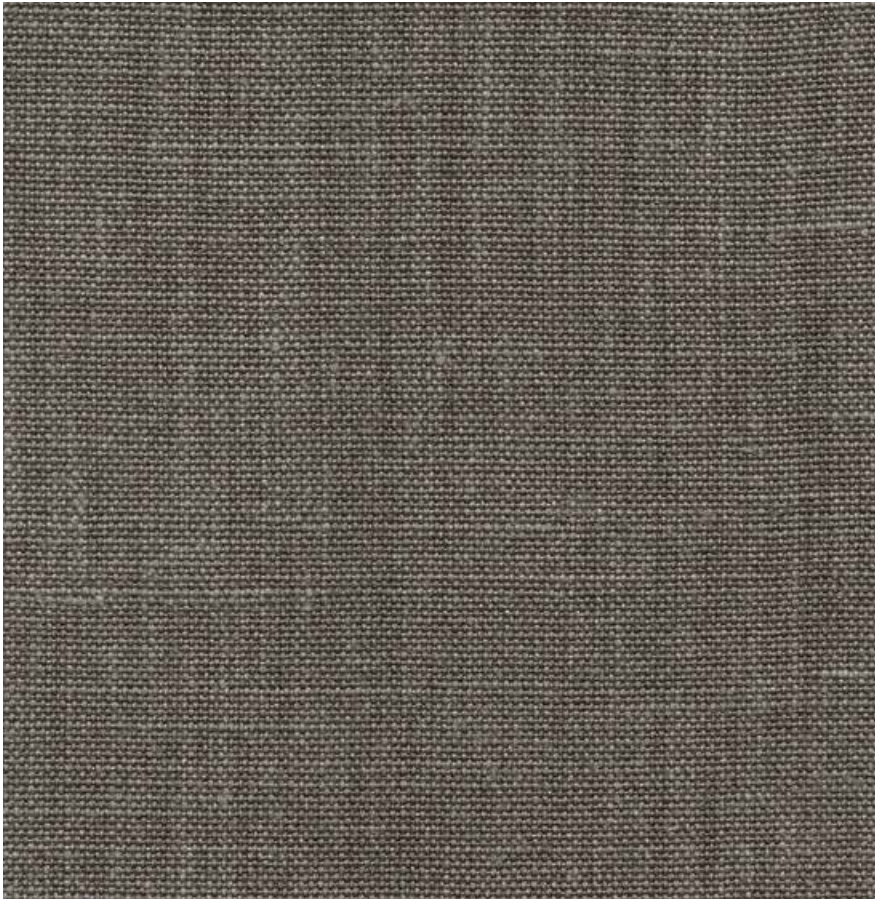
PARIS TEXAS, SLATE 3371



PARIS TEXAS, INK 8753

STOFFE / FABRICS

ANTWERP (STOFFGRUPPE B / FABRIC GROUP B) 100% LEINEN / LINEN



ANTWERP, SMOKE 13242

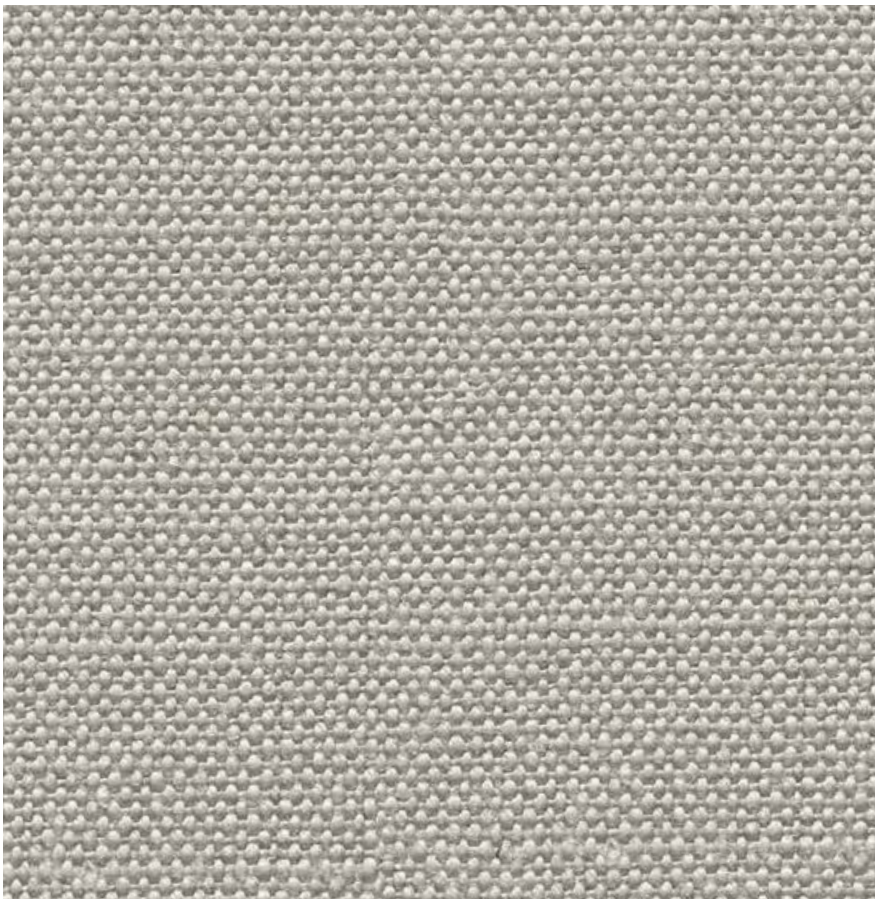


ANTWERP, OYSTER 13247

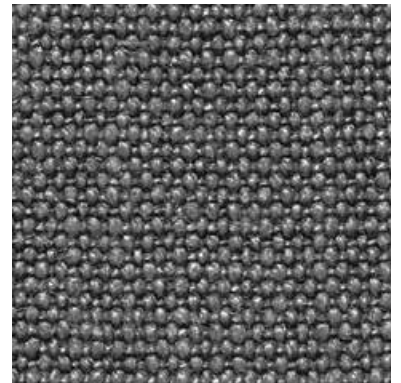


ANTWERP, CARBON 13274

SIERRA (STOFFGRUPPE B / FABRIC GROUP B) 100% LEINEN / LINEN



SIERRA, STERLING 13617



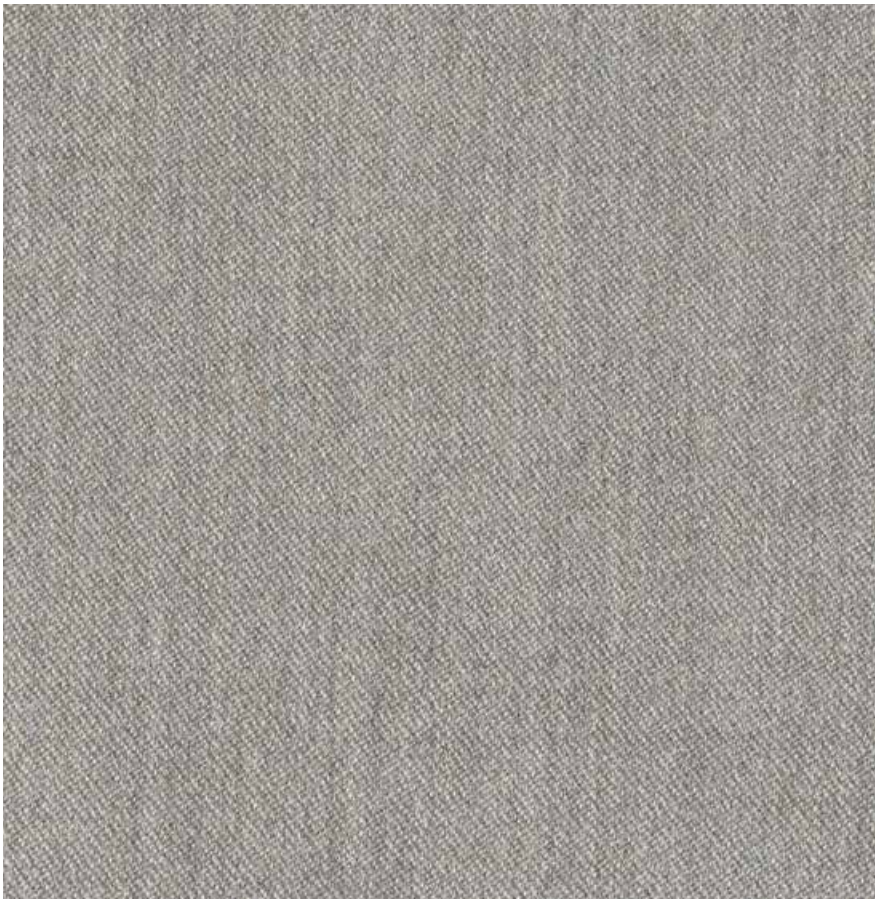
SIERRA, GRAPHITE 136004



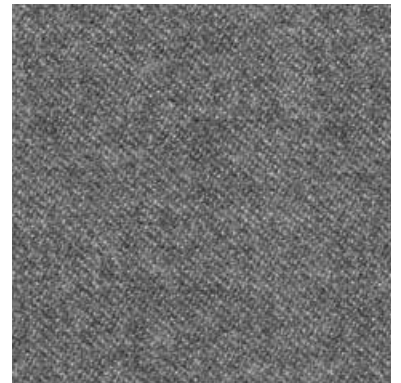
SIERRA, MIDNIGHT 13619

STOFFE / FABRICS

LAMA (STOFFGRUPPE B / FABRIC GROUP B) 65% WOLLE / WOOL, 20% NYLON / NYLON, 15% ALPAKA / ALPACA



LAMA, OYSTER 801

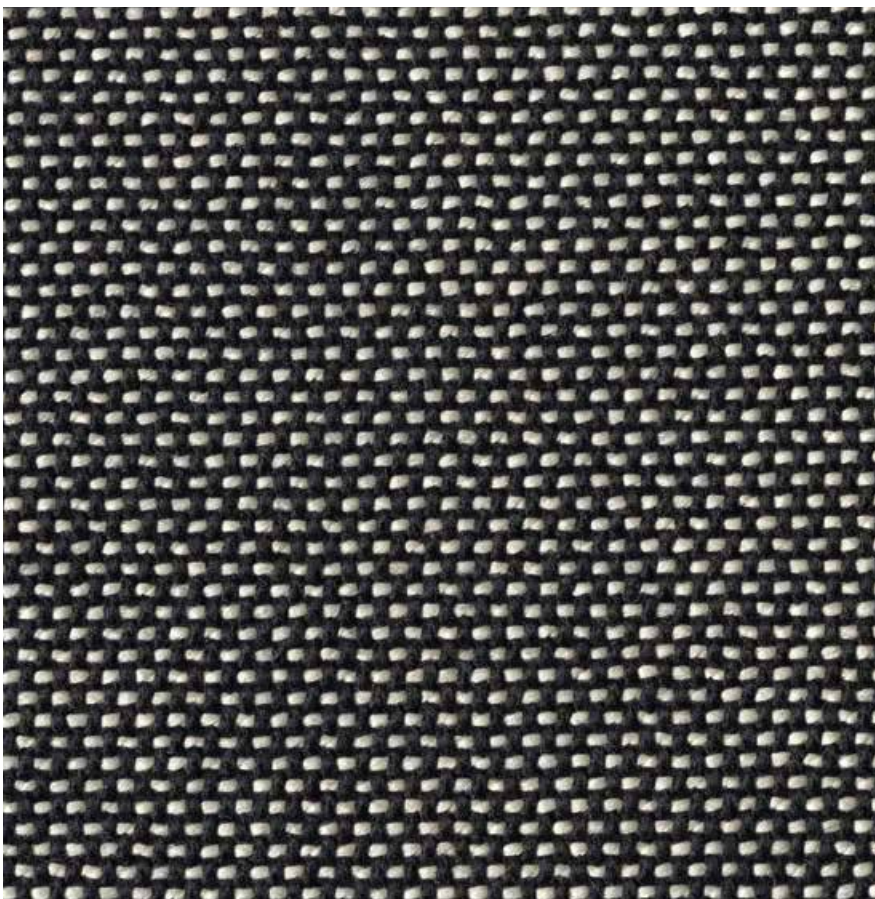


LAMA, STONE 8



LAMA, CARBON 5

INTRECCIO (STOFFGRUPPE D / FABRIC GROUP D) 77% SCHURWOLLE / NEW WOOL, 23 % BAUMWOLLE / COTTON



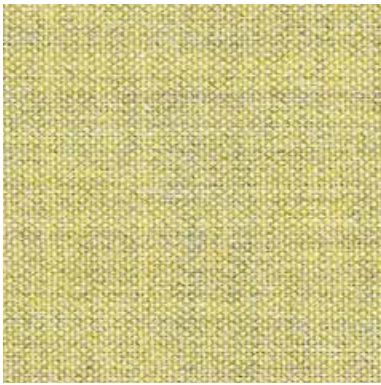
INTRECCIO 16



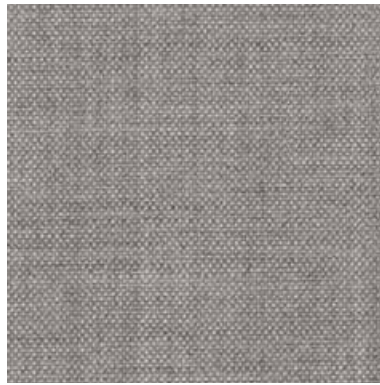
INTRECCIO 17

STOFFE / FABRICS

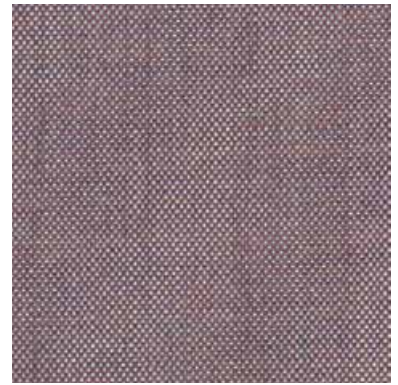
REMIX (STOFFGRUPPE C / FABRIC GROUP C) 90% SCHURWOLLE / NEW WOOL, 10% NYLON / NYLON



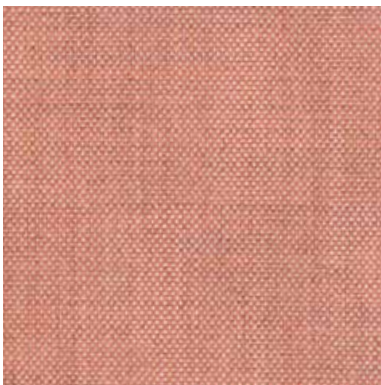
REMIX, MARIGOLD 923



REMIX, STERLING 123



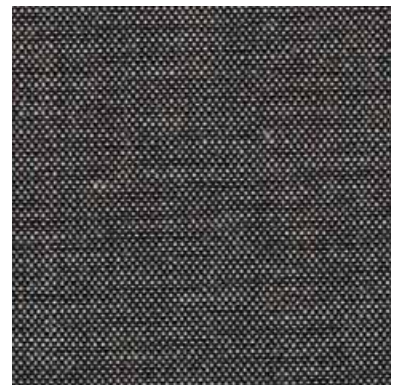
REMIX, LAVENDER 682



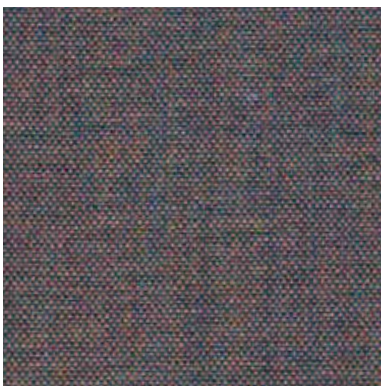
REMIX, ROSE 612



REMIX, COGNAC 252



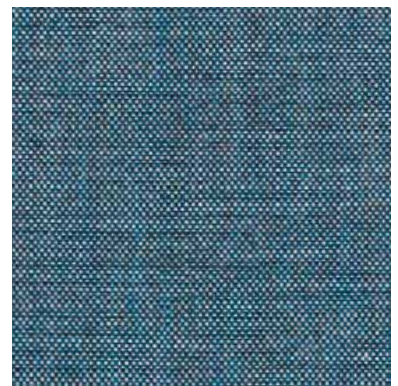
REMIX, CHESS 152



REMIX, ROSE GRAPHITE 672



REMIX, COGNAC GRAPHITE 852



REMIX, INDIGO 716



REMIX, CARBON 393



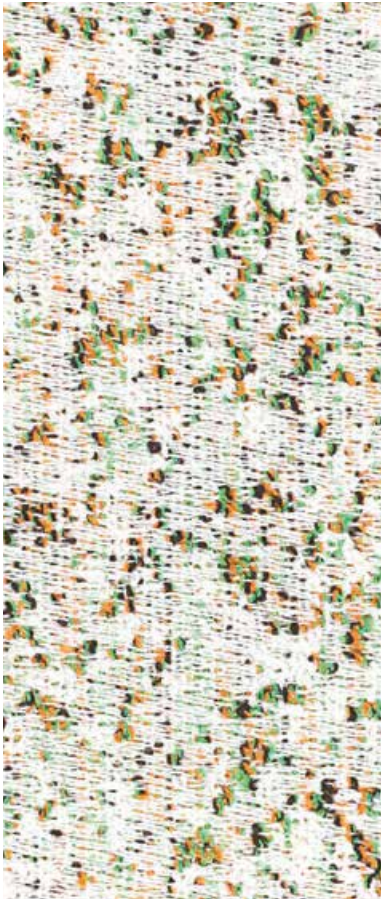
REMIX, CHARCOAL 173



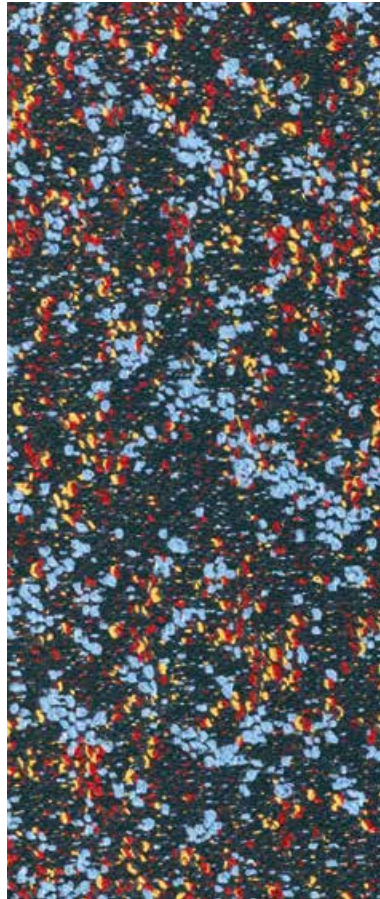
REMIX, MIDNIGHT 796

STOFFE / FABRICS

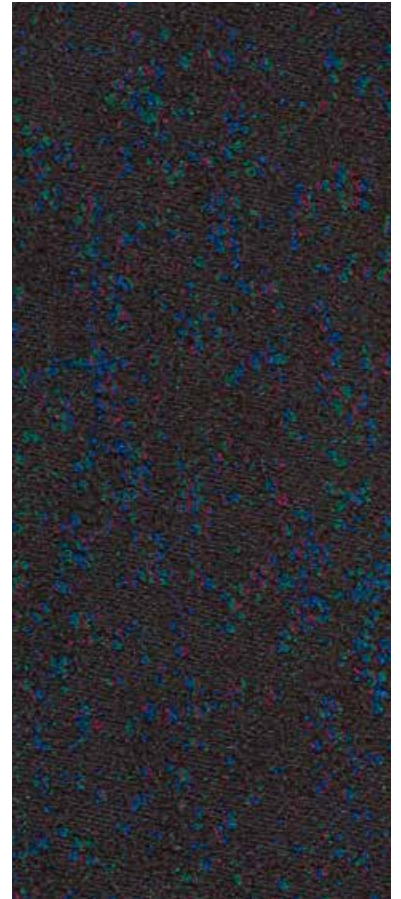
ATOM (STOFFGRUPPE D / FABRIC GROUP D) 90% SCHURWOLLE, KAMMGARN / NEW WOOL, WORSTED YARN, 8% NYLON / NYLON, 2% POLYESTER / POLYESTER



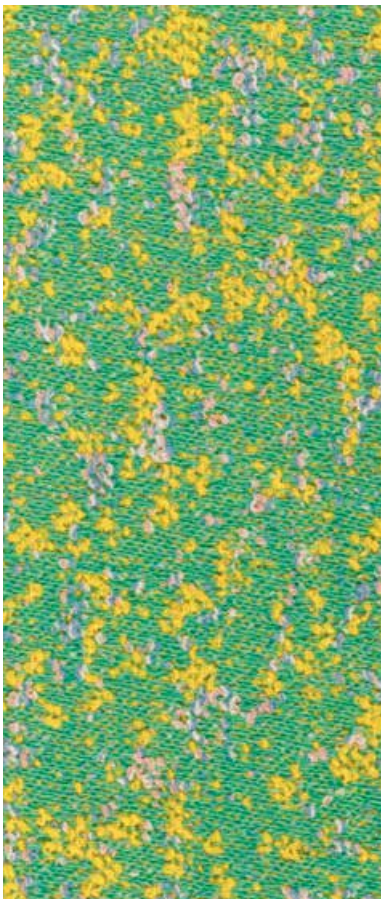
ATOM, IVORY 124



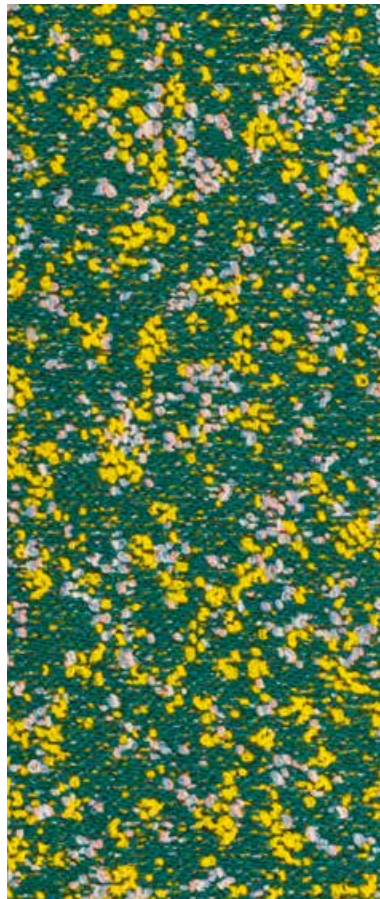
ATOM, BLACK FOREST 774



ATOM, BLACK 194



ATOM, SPRING GREEN 944



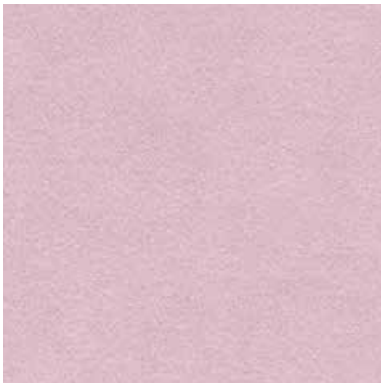
ATOM, FOREST 964



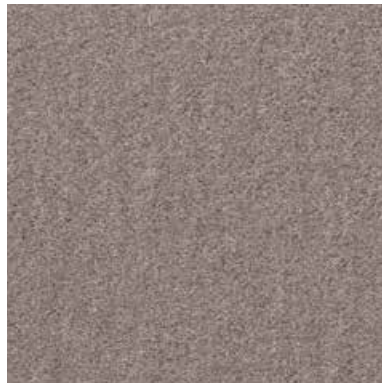
ATOM, POPPY 574

STOFFE / FABRICS

ZANZIBAR (STOFFGRUPPE D / FABRIC GROUP D) 100% MOHAIR, BYRAM (STOFFGRUPPE D / FABRIC GROUP D) 100% KID MOHAIR



BYRAM, ROSE 621



ZANZIBAR, SANDSTONE 11



ZANZIBAR, CARAMEL 01



BYRAM, BAZOOKA 661



BYRAM, OCHRE 471



BYRAM, LAVENDER 651



ZANZIBAR, CARNELIAN 18



BRAM, TAUPE 361



ZANZIBAR, OLIVE 30



BYRAM, POMEGRANATE 691



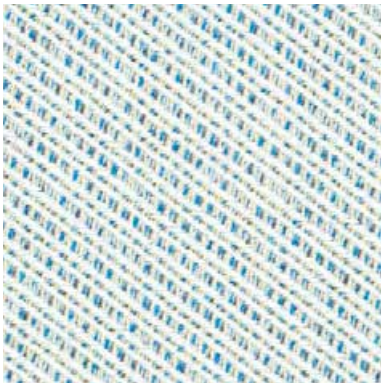
BYRAM, ESPRESSO 391



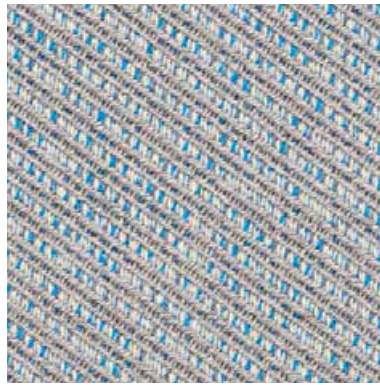
BYRAM, MIDNIGHT 791

STOFFE / FABRICS

MASAI (STOFFGRUPPE D / FABRIC GROUP D) 90% SCHURWOLLE / NEW WOOL, 10% NYLON / NYLON



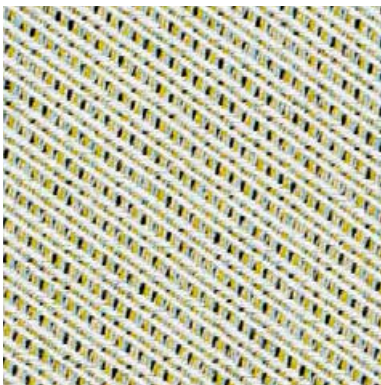
MASAI, IVORY 112



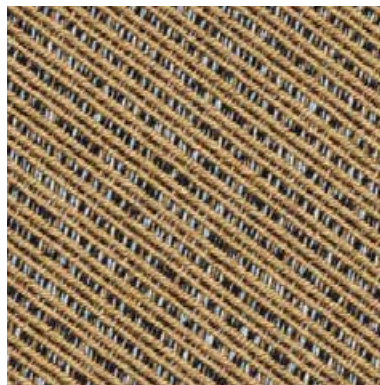
MASAI, SILK GREY 222



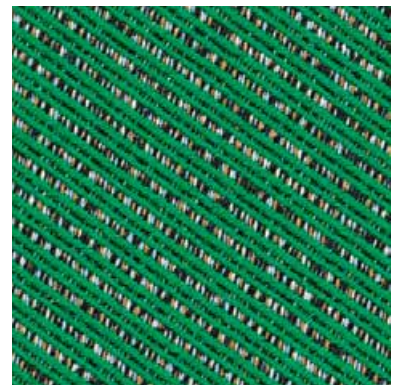
MASAI, STONE GREY 142



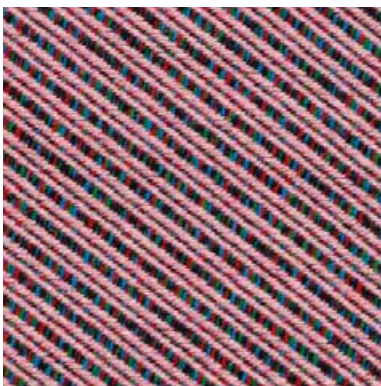
MASAI, GINGER 122



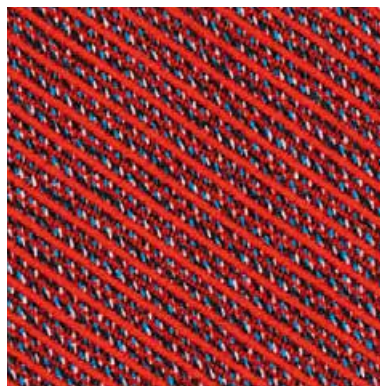
MASAI, BRASS 242



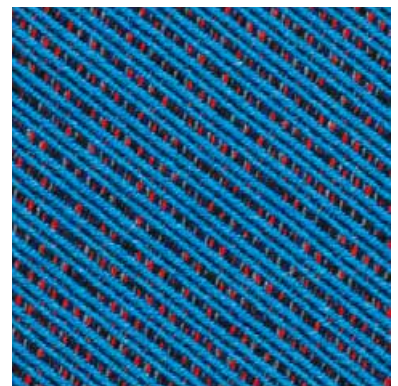
MASAI, GREEN 952



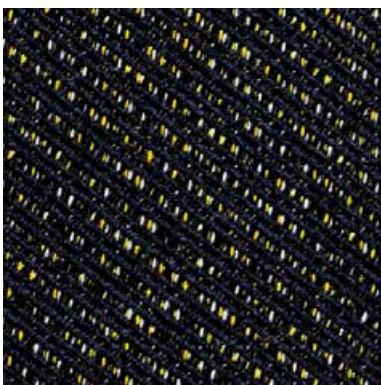
MASAI, PINK 632



MASAI, RED 662



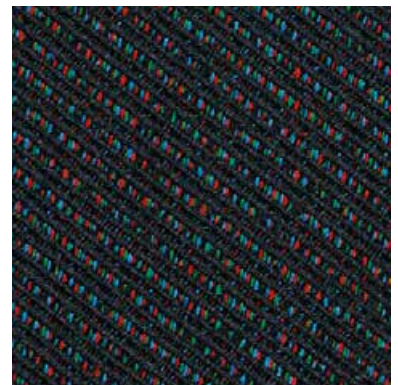
MASAI, BLUE 762



MASAI, BLACK-YELLOW 792



MASAI, DARK GREEN 992



MASAI, BLACK-MULTI 192

STOFFE / FABRICS

TARTAN (STOFFGRUPPE D / FABRIC GROUP D) 100% WOLLE / WOOL



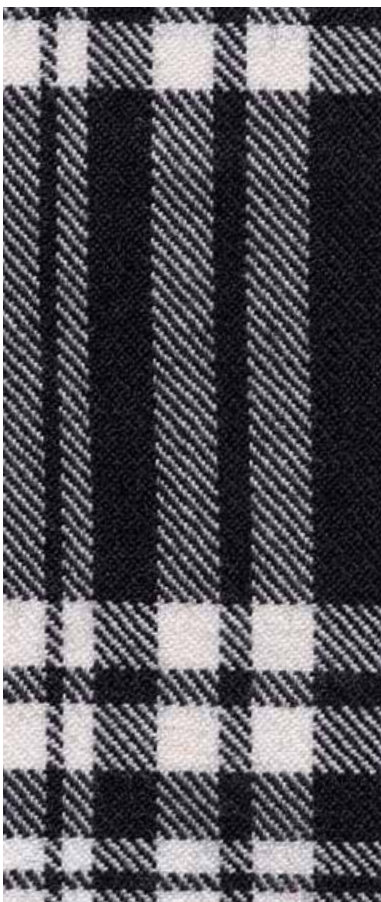
ANCIENT ANGUS



CORNISH NATIONAL



MAC NAUGHTON DRESS MODERN



MENZIES BLACK AND WHITE



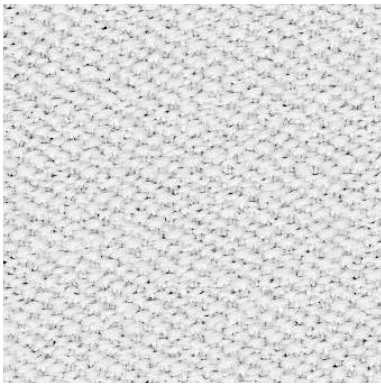
INNES RED ANCIENT



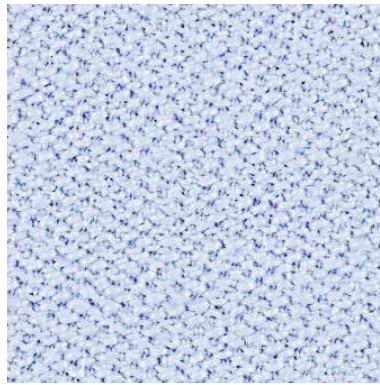
ERSKINE BLACK AND WHITE

STOFFE / FABRICS

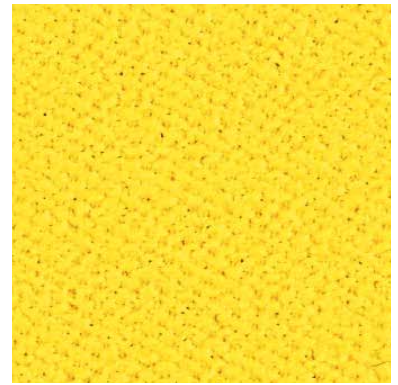
VIDAR (STOFFGRUPPE D / FABRIC GROUP D) 94% SCHURWOLLE / NEW WOOL, 6% POLYAMID / POLYAMIDE



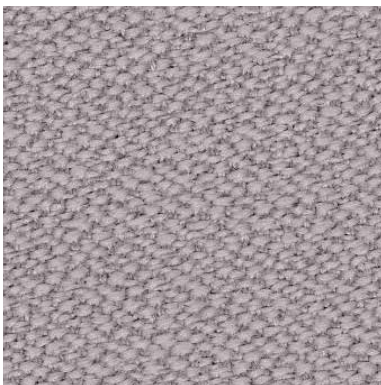
VIDAR, SILK GREY 123



VIDAR, LAVENDER BLUE 723



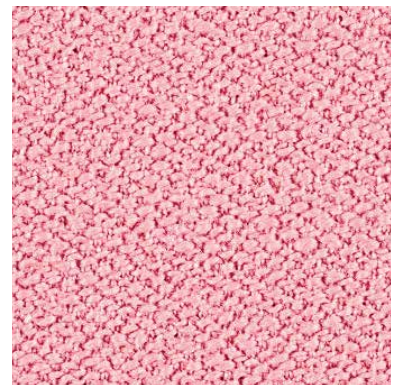
VIDAR, LEMON 443



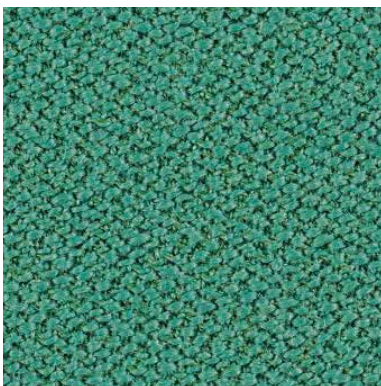
VIDAR, MUSHROOM 143



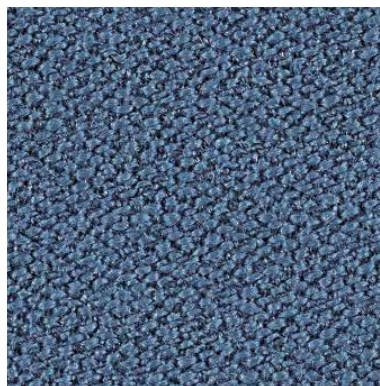
VIDAR, SLATE 133



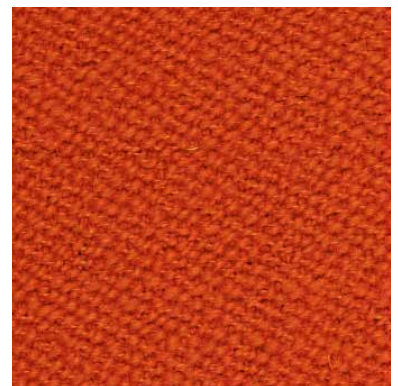
VIDAR, BAZOOKA 622



VIDAR, SAGE 943



VIDAR, OCEAN 733



VIDAR, CAMPARI 542



VIDAR, OLIVE 972



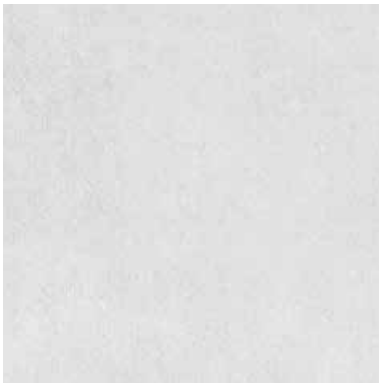
VIDAR, MIDNIGHT 554



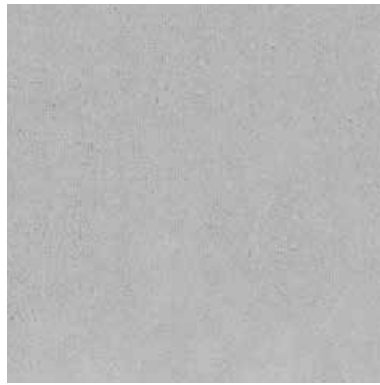
VIDAR, BLACK 1880

STOFFE / FABRICS

BALBOA (STOFFGRUPPE D / FABRIC GROUP D) 100% POLYESTER FR (SAMT) / POLYESTER FR (VELVET)



BALBOA, SILK GREY 24



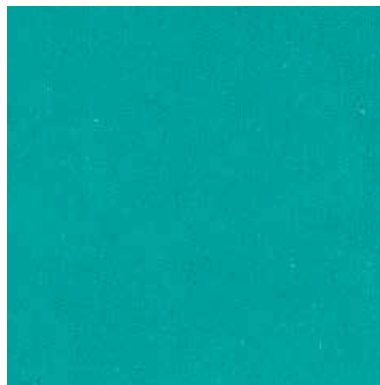
BALBOA, OYSTER 27



BALBOA, STONE GREY 31



BALBOA, CARAMEL 07



BALBOA, AMALFI GREEN 17



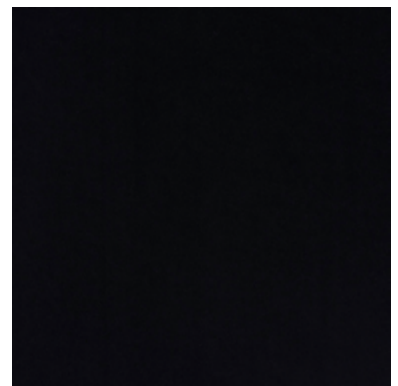
BALBOA, CHARCOAL 32



BALBOA, ESPRESSO 29



BALBOA, CYPRESS GREEN 12



BALBOA, BLACK 30



BALBOA, MIDNIGHT BLUE 19



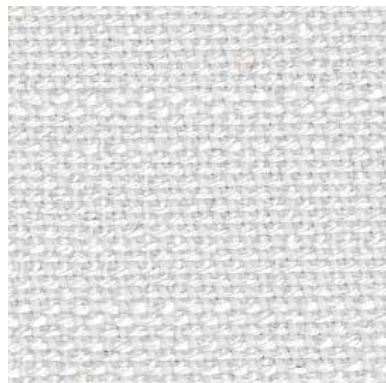
BALBOA, ELECTRIC BLUE 18



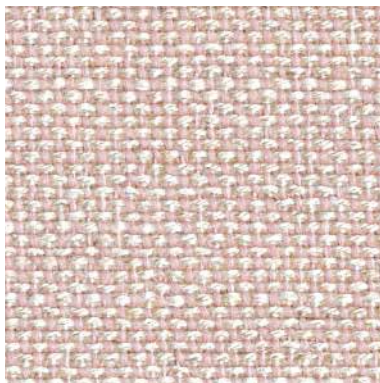
BALBOA, POMEGRANATE 01

STOFFE / FABRICS

SUNNIVA (STOFFGRUPPE D / FABRIC GROUP D) 58% SCHURWOLLE / NEW WOOL, 25% VISKOSE / VISCOSE, 8% LEINEN / LINEN, 5% NYLON / NYLON, 4% POLYESTER / POLYESTER



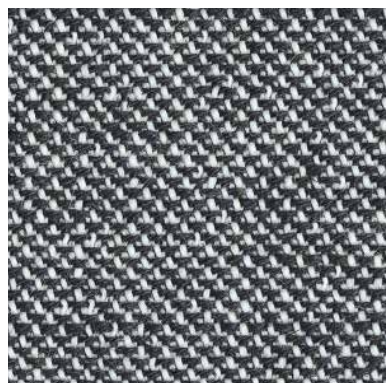
SUNNIVA, SILK GREY 223



SUNNIVA, ROSE 236



SUNNIVA, SAND 717



SUNNIVA, CHESS 163



SUNNIVA, SLATE BLUE 752



SUNNIVA, STONE GREY 242



SUNNIVA, MOSS GREEN 1079



SUNNIVA, CYPRESS GREEN 863



SUNNIVA, SMOKE GREY 173



SUNNIVA, CHARCOAL 183



SUNNIVA, PETROL BLUE 783



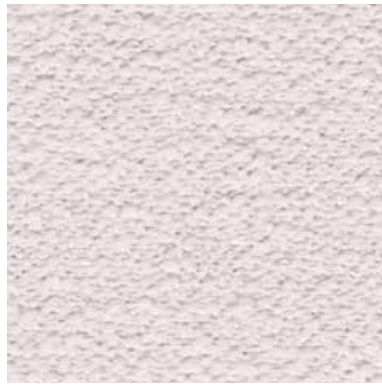
SUNNIVA, BLACK 193

STOFFE / FABRICS

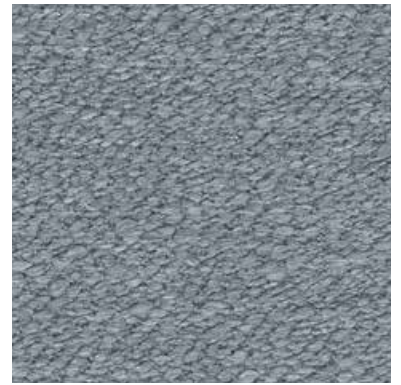
HELIA (STOFFGRUPPE E / FABRIC GROUP E) 47% SCHURWOLLE / NEW WOOL, 32% ACRYL / ACRYLIC, 15% VISKOSE / VISCOSE, 4% NYLON, NYLON, 2% POLYESTER / POLYESTER



HELIA, SILK GREY 233



HELIA, IVORY 113



HELIA, SMOKE 153



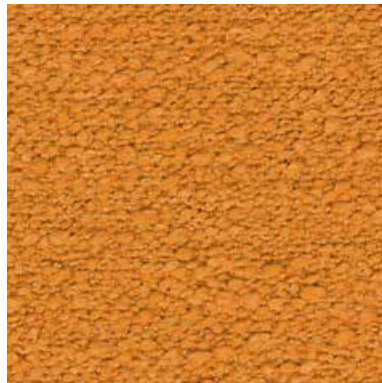
HELIA, BLACK193



HELIA, GRAPHITE 993



HELIA, LEMON 433



HELIA, TURMERIC 533



HELIA, CAYENNE 253



HELIA, CAPER 953



HELIA, AQUA 733



HELIA, SUMAQ 693

LEDER / LEATHER

LEDER SELECT (STOFFGRUPPE E / FABRIC GROUP E)

RINDSLEDER, SEMI-ANILIN, PIGMENTIERT, GEPRÄGT, 1,2-1,4 MM / COW HIDE, SEMI ANILINE, PIGMENTED, EMBOSSED, 1.2-1.4 MM



WHITE 001



STERLING 310



CHAMPIGNON 015



PERKAMENT 318



ELEPHANT 320



SMOKE 231



COGNAC 307



WALNUT 234



ESPRESSO 306



BORDEAUX 332



OLIVE 620

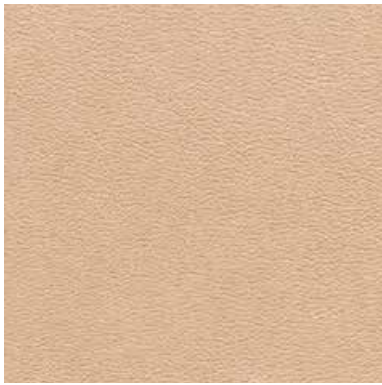


BLACK 301

LEDER / LEATHER

LEDER RANCHERO (STOFFGRUPPE F / FABRIC GROUP F)

RINDSLEDER, REIN ANILIN, ANILIN GEFÄRBT, 0,9-1,4 MM / COW HIDE, PURE ANILINE, ANILINE DYED, 0.9-1.4 MM



VEGETAL 90 / VEGETAL 90



WHISKEY / WHISKEY



NUSS / WALNUT



BRAUN / BROWN



OLIV / OLIVE



SCHWARZ / BLACK

VELOURLEDER / SUEDE (STOFFGRUPPE E / FABRIC GROUP E)

RINDSPALTKERNSTÜCK, ANILIN GEFÄRBT, GESCHLIFFEN, 1,6-1,8 MM / SUEDE LEATHER, ANILINE DYED, BRUSHED, 1.6-1.8 MM



BELVEDERE ML0202



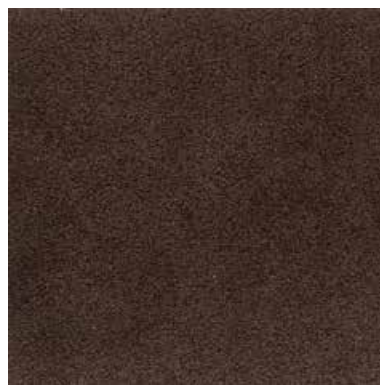
CAMEL ML0205



MUSKAT ML0206



TORF ML0201



CONGO ML0209



JET ML0210

POLSTERSTOFFE (STOFFGRUPPEN) / UPHOLSTERY FABRICS (FABRIC GROUPS)

ANCIENT ANGUS (D)	<p>QUALITÄT / CONTENT SCHEUERFESTIGKEIT / RUB RESISTANCE LICHTTECHTHEIT / FASTNESS TO LIGHT FLAMMSCHUTZ / FLAME RESISTANCE BREITE / WIDTH GEWICHT PRO QM / WEIGHT PER SQM PFLEGEANLEITUNG / CARE INSTRUCTIONS</p>	<p>100% WOLLE / WOOL 40.000 MARTINDALE - - 1400 MM (55 1/8 INCH) 380-515 GR </p>
ANTWERP (B)	<p>QUALITÄT / CONTENT SCHEUERFESTIGKEIT / RUB RESISTANCE LICHTTECHTHEIT / FASTNESS TO LIGHT FLAMMSCHUTZ / FLAME RESISTANCE BREITE / WIDTH GEWICHT PRO QM / WEIGHT PER SQM PFLEGEANLEITUNG / CARE INSTRUCTIONS</p>	<p>100% LEINEN / LINEN 25.000 MARTINDALE - - 1500 MM (59 INCH) 700 GR </p>
ATOM (E)	<p>QUALITÄT / CONTENT SCHEUERFESTIGKEIT / RUB RESISTANCE LICHTTECHTHEIT / FASTNESS TO LIGHT FLAMMSCHUTZ / FLAME RESISTANCE BREITE / WIDTH GEWICHT PRO QM / WEIGHT PER SQM PFLEGEANLEITUNG / CARE INSTRUCTIONS</p>	<p>90% SCHURWOLLE, KAMMGARN / NEW WOOL, WORSTED YARN, 8% NYLON / NYLON, 2% POLYESTER / POLYESTER 65.000 MARTINDALE TYP 7 (ISO 1-8) EN 1021-1/2 1500 MM (59 INCH) 706 GR </p>
BALBOA (D)	<p>QUALITÄT / CONTENT SCHEUERFESTIGKEIT / RUB RESISTANCE LICHTTECHTHEIT / FASTNESS TO LIGHT FLAMMSCHUTZ / FLAME RESISTANCE BREITE / WIDTH GEWICHT PRO QM / WEIGHT PER SQM PFLEGEANLEITUNG / CARE INSTRUCTIONS</p>	<p>100% POLYESTER FR / POLYESTER FR 100.000 MARTINDALE TYP 6 EN 1021-1/2, BS 5852, DIN 4102, B1 1400 MM (55 1/8 INCH) 960 GR </p>
BASEL^{3,4} (C)	<p>QUALITÄT / CONTENT SCHEUERFESTIGKEIT / RUB RESISTANCE LICHTTECHTHEIT / FASTNESS TO LIGHT FLAMMSCHUTZ / FLAME RESISTANCE BREITE / WIDTH GEWICHT PRO QM / WEIGHT PER SQM PFLEGEANLEITUNG / CARE INSTRUCTIONS</p>	<p>90% SCHURWOLLE / NEW WOOL, 10% NYLON / NYLON 50.000 MARTINDALE TYP 6-7, ISO 105-B02 EN 1021-1/2, DIN 4102, B2 1400 MM (55 1/8 INCH) 510 GR </p>
BRASILIA (C)	<p>QUALITÄT / CONTENT SCHEUERFESTIGKEIT / RUB RESISTANCE LICHTTECHTHEIT / FASTNESS TO LIGHT FLAMMSCHUTZ / FLAME RESISTANCE BREITE / WIDTH GEWICHT PRO QM / WEIGHT PER SQM PFLEGEANLEITUNG / CARE INSTRUCTIONS</p>	<p>23% LEINEN / LINEN, 20% BAUMWOLLE / COTTON, 20% WOLLE / WOOL 19% POLYAMID / POLYAMIDE, 11% SEIDE / SILK, 7% BAMBUS / BAMBOO 40.000 MARTINDALE TYP 4-5, ISO 12947-2 - 1300 MM (51 1/8 INCH) 494 GR </p>
BYRAM (E)	<p>QUALITÄT / CONTENT SCHEUERFESTIGKEIT / RUB RESISTANCE LICHTTECHTHEIT / FASTNESS TO LIGHT FLAMMSCHUTZ / FLAME RESISTANCE BREITE / WIDTH GEWICHT PRO QM / WEIGHT PER SQM PFLEGEANLEITUNG / CARE INSTRUCTIONS</p>	<p>100% KID MOHAIR / KID MOHAIR 70.000 MARTINDALE TYP 7 EN 1021-1/2 1400 MM (55 INCH) 890 GR </p>
CODA⁴ (E)	<p>QUALITÄT / CONTENT SCHEUERFESTIGKEIT / RUB RESISTANCE LICHTTECHTHEIT / FASTNESS TO LIGHT FLAMMSCHUTZ / FLAME RESISTANCE BREITE / WIDTH GEWICHT PRO QM / WEIGHT PER SQM PFLEGEANLEITUNG / CARE INSTRUCTIONS</p>	<p>90% SCHURWOLLE / NEW WOOL, 10% POLYAMID / POLYAMIDE 100.000 MARTINDALE TYP 5-7, ISO 1-8 EN 1021-1/2, DIN 4102, B2, ITALIAN CLASS 11M 1400 MM (55 1/8 INCH) 614 GR </p>
CORNISH NATIONAL (D)	<p>QUALITÄT / CONTENT SCHEUERFESTIGKEIT / RUB RESISTANCE LICHTTECHTHEIT / FASTNESS TO LIGHT FLAMMSCHUTZ / FLAME RESISTANCE BREITE / WIDTH GEWICHT PRO QM / WEIGHT PER SQM PFLEGEANLEITUNG / CARE INSTRUCTION</p>	<p>100% WOLLE / WOOL 40.000 MARTINDALE - - 1400 MM (55 1/8 INCH) 380-515 GR </p>

DIVINA^{3,4} (D)	QUALITÄT / CONTENT SCHEUERFESTIGKEIT / RUB RESISTANCE LICHTECHTHEIT / FASTNESS TO LIGHT FLAMMSCHUTZ / FLAME RESISTANCE BREITE / WIDTH GEWICHT PRO QM / WEIGHT PER SQM PFLEGEANLEITUNG / CARE INSTRUCTIONS	100% SCHURWOLLE / NEW WOOL 45.000 MARTINDALE TYP 5-7, ISO 105-B02 EN 1021-1/2, BS 5852 1500 MM (59 INCH) 820 GR 	
DIVINA MELANGE⁴ (D)	QUALITÄT / CONTENT SCHEUERFESTIGKEIT / RUB RESISTANCE LICHTECHTHEIT / FASTNESS TO LIGHT FLAMMSCHUTZ / FLAME RESISTANCE BREITE / WIDTH GEWICHT PRO QM / WEIGHT PER SQM PFLEGEANLEITUNG / CARE INSTRUCTIONS	100% SCHURWOLLE / NEW WOOL 45.000 MARTINDALE TYP 5-7, ISO 105-B02 EN 1021-1/2, BS 5852 1500 MM (59 INCH) 820 GR 	
ERSKINE BLACK AND WHITE (D)	QUALITÄT / CONTENT SCHEUERFESTIGKEIT / RUB RESISTANCE LICHTECHTHEIT / FASTNESS TO LIGHT FLAMMSCHUTZ / FLAME RESISTANCE BREITE / WIDTH GEWICHT PRO QM / WEIGHT PER SQM PFLEGEANLEITUNG / CARE INSTRUCTIONS	100% WOLLE / WOOL 40.000 MARTINDALE - - 1400 MM (55 1/8 INCH) 380-515 GR 	
FIELD⁴ (B)	QUALITÄT / CONTENT SCHEUERFESTIGKEIT / RUB RESISTANCE LICHTECHTHEIT / FASTNESS TO LIGHT FLAMMSCHUTZ / FLAME RESISTANCE BREITE / WIDTH GEWICHT PRO QM / WEIGHT PER SQM PFLEGEANLEITUNG / CARE INSTRUCTIONS	100% TREVIRA CS / TREVIRA CS 100.000 MARTINDALE TYP 5-7, ISO 1-8 EN 1021-1/2, DIN 4102, B1 1400 MM (55 1/8 INCH) 430 GR 	
HALLINGDAL^{3,4} (D)	QUALITÄT / CONTENT SCHEUERFESTIGKEIT / RUB RESISTANCE LICHTECHTHEIT / FASTNESS TO LIGHT FLAMMSCHUTZ / FLAME RESISTANCE BREITE / WIDTH GEWICHT PRO QM / WEIGHT PER SQM PFLEGEANLEITUNG / CARE INSTRUCTIONS	70% SCHURWOLLE / NEW WOOL, 30% VISKOSE / VISCOSE 100.000 MARTINDALE TYP 5-7, ISO 1-8 EN 1021-1/2, DIN 4102, B2 1300 MM (51 1/8 INCH) 612 GR 	
HARALD⁴ (D)	QUALITÄT / CONTENT SCHEUERFESTIGKEIT / RUB RESISTANCE LICHTECHTHEIT / FASTNESS TO LIGHT FLAMMSCHUTZ / FLAME RESISTANCE BREITE / WIDTH GEWICHT PRO QM / WEIGHT PER SQM PFLEGEANLEITUNG / CARE INSTRUCTIONS	100% BAUMWOLLE / COTTON 100.000 MARTINDALE TYP 6 EN 1021-1 1400 MM (55 1/8 INCH) 520 GR 	NICHT ZUR MÖBELPOLSTERUNG ZU EMPFEHLEN / NOT RECOMMENDED FOR FURNITURE UPHOLSTERY
HELIA (E)	QUALITÄT / CONTENT SCHEUERFESTIGKEIT / RUB RESISTANCE LICHTECHTHEIT / FASTNESS TO LIGHT FLAMMSCHUTZ / FLAME RESISTANCE BREITE / WIDTH GEWICHT PRO QM / WEIGHT PER SQM PFLEGEANLEITUNG / CARE INSTRUCTIONS	47% SCHURWOLLE / NEW WOOL, 32% ACRYL / ACRYLIC, 15% VISKOSE / VISCOSE, 4% NYLON, NYLON, 2% POLYESTER / POLYESTER 50.000 MARTINDALE TYP 7 BS 5852 1520 MM (59 13/16 INCH) 960 GR 	
HOUNDSTOOTH³ (C)	QUALITÄT / CONTENT SCHEUERFESTIGKEIT / RUB RESISTANCE LICHTECHTHEIT / FASTNESS TO LIGHT FLAMMSCHUTZ / FLAME RESISTANCE BREITE / WIDTH GEWICHT PRO QM / WEIGHT PER SQM PFLEGEANLEITUNG / CARE INSTRUCTIONS	92% SCHURWOLLE / NEW WOOL, 8% NYLON / NYLON 60.000 MARTINDALE BS EN ISO 105 - B02: 1999 BS EN 1021-1/2 1400 MM (55 1/8 INCH) 357 GR 	
INNES RED ANCIENT (D)	QUALITÄT / CONTENT SCHEUERFESTIGKEIT / RUB RESISTANCE LICHTECHTHEIT / FASTNESS TO LIGHT FLAMMSCHUTZ / FLAME RESISTANCE BREITE / WIDTH GEWICHT PRO QM / WEIGHT PER SQM PFLEGEANLEITUNG / CARE INSTRUCTIONS	100% WOLLE / WOOL 40.000 MARTINDALE - - 1400 MM (55 1/8 INCH) 380-515 GR 	

INTRECCIO (D)	QUALITÄT / CONTENT SCHEUERFESTIGKEIT / RUB RESISTANCE LICHTECHTHEIT / FASTNESS TO LIGHT FLAMMSCHUTZ / FLAME RESISTANCE BREITE / WIDTH GEWICHT PRO QM / WEIGHT PER SQM PFLEGEANLEITUNG / CARE INSTRUCTIONS	77% SCHURWOLLE / NEW WOOL, 23 % BAUMWOLLE / COTTON 80.000 MARTINDALE - - 1400 MM (55 1/8 INCH) 777 GR
LAMA (C)	QUALITÄT / CONTENT SCHEUERFESTIGKEIT / RUB RESISTANCE LICHTECHTHEIT / FASTNESS TO LIGHT FLAMMSCHUTZ / FLAME RESISTANCE BREITE / WIDTH GEWICHT PRO QM / WEIGHT PER SQM PFLEGEANLEITUNG / CARE INSTRUCTIONS	65% WOLLE / WOOL, 20% NYLON / NYLON, 15% ALPAKA / ALPACA 100.000 MARTINDALE TYP 4 - 5 - 1400 MM (55 1/8 INCH) 600 GR
LOUPO (C)	QUALITÄT / CONTENT SCHEUERFESTIGKEIT / RUB RESISTANCE LICHTECHTHEIT / FASTNESS TO LIGHT FLAMMSCHUTZ / FLAME RESISTANCE BREITE / WIDTH GEWICHT PRO QM / WEIGHT PER SQM PFLEGEANLEITUNG / CARE INSTRUCTIONS	36% WOLLE / WOOL, 34% BAUMWOLLE / COTTON, 22% VISKOSE / VISCOSE, 8% POLYESTER / POLYESTER 45.000 MARTINDALE TYP 4 - 1400 MM (55 1/8 INCH) 584 GR
MAC NAUGHTON DRESS MODERN (D)	QUALITÄT / CONTENT SCHEUERFESTIGKEIT / RUB RESISTANCE LICHTECHTHEIT / FASTNESS TO LIGHT FLAMMSCHUTZ / FLAME RESISTANCE BREITE / WIDTH GEWICHT PRO QM / WEIGHT PER SQM PFLEGEANLEITUNG / CARE INSTRUCTIONS	100% WOLLE / WOOL 40.000 MARTINDALE - - 800 MM (31 1/2 INCH) 380-515 GR
MASAI (D)	QUALITÄT / CONTENT SCHEUERFESTIGKEIT / RUB RESISTANCE LICHTECHTHEIT / FASTNESS TO LIGHT FLAMMSCHUTZ / FLAME RESISTANCE BREITE / WIDTH GEWICHT PRO QM / WEIGHT PER SQM PFLEGEANLEITUNG / CARE INSTRUCTIONS	90% SCHURWOLLE / NEW WOOL, 10% NYLON / NYLON 80.000 MARTINDALE TYP 4 EN1021-1/2, BS 5852, DIN 4102, B2 1400 MM (55 1/8 INCH) 560 GR
MENZIES BLACK & WHITE (D)	QUALITÄT / CONTENT SCHEUERFESTIGKEIT / RUB RESISTANCE LICHTECHTHEIT / FASTNESS TO LIGHT FLAMMSCHUTZ / FLAME RESISTANCE BREITE / WIDTH GEWICHT PRO QM / WEIGHT PER SQM PFLEGEANLEITUNG / CARE INSTRUCTIONS	100% WOLLE / WOOL 40.000 MARTINDALE - - 1400 MM (55 1/8 INCH) 380-515 GR
PARIS TEXAS (B)	QUALITÄT / CONTENT SCHEUERFESTIGKEIT / RUB RESISTANCE LICHTECHTHEIT / FASTNESS TO LIGHT FLAMMSCHUTZ / FLAME RESISTANCE BREITE / WIDTH GEWICHT PRO QM / WEIGHT PER SQM PFLEGEANLEITUNG / CARE INSTRUCTIONS	63% BAUMWOLLE / COTTON, 37% LEINEN / LINEN 36.000 MARTINDALE - M1, BS5897, BS5852, BS7175 EN1021-1/2, EN13772 1400 MM (55 1/8 INCH) 380 GR
PHLOX (D)	QUALITÄT / CONTENT SCHEUERFESTIGKEIT / RUB RESISTANCE LICHTECHTHEIT / FASTNESS TO LIGHT FLAMMSCHUTZ / FLAME RESISTANCE BREITE / WIDTH GEWICHT PRO QM / WEIGHT PER SQM PFLEGEANLEITUNG / CARE INSTRUCTIONS	90% BAUMWOLLE / COTTON, 10% POLYESTER / POLYESTER 100.000 MARTINDALE TYP 4-7 (ISO 1-8) EN 1021-1/2 1380 MM (54 3/8 INCH) 613 GR
REMIX³⁴ (C)	QUALITÄT / CONTENT SCHEUERFESTIGKEIT / RUB RESISTANCE LICHTECHTHEIT / FASTNESS TO LIGHT FLAMMSCHUTZ / FLAME RESISTANCE BREITE / WIDTH GEWICHT PRO QM / WEIGHT PER SQM PFLEGEANLEITUNG / CARE INSTRUCTIONS	90% SCHURWOLLE / NEW WOOL, 10% NYLON / NYLON 100.000 MARTINDALE TYP 5-7, ISO 105-B02 EN 1021-1/2, BS 5852 1350 MM (53 1/8 INCH) 460 GR

SIERRA (B)	QUALITÄT / CONTENT SCHEUERFESTIGKEIT / RUB RESISTANCE LICHTTECHTHEIT / FASTNESS TO LIGHT FLAMMSCHUTZ / FLAME RESISTANCE BREITE / WIDTH GEWICHT PRO QM / WEIGHT PER SQM PFLEGEANLEITUNG / CARE INSTRUCTIONS	100% LEINEN / LINEN 25.000 MARTINDALE - - 1450 MM (57 INCH) 1000 GR
STEELCUT* (C)	QUALITÄT / CONTENT SCHEUERFESTIGKEIT / RUB RESISTANCE LICHTTECHTHEIT / FASTNESS TO LIGHT FLAMMSCHUTZ / FLAME RESISTANCE BREITE / WIDTH GEWICHT PRO QM / WEIGHT PER SQM PFLEGEANLEITUNG / CARE INSTRUCTIONS	90% SCHURWOLLE / NEW WOOL, KAMMGARN / GABARDINE, 10% NYLON / NYLON 80.000 MARTINDALE TYP 5-7, ISO 1-8 EN 1021-1/2 1400 MM (55 1/8 INCH) 825 GR
STEELCUTTRIO* (C)	QUALITÄT / CONTENT SCHEUERFESTIGKEIT / RUB RESISTANCE LICHTTECHTHEIT / FASTNESS TO LIGHT FLAMMSCHUTZ / FLAME RESISTANCE BREITE / WIDTH GEWICHT PRO QM / WEIGHT PER SQM PFLEGEANLEITUNG / CARE INSTRUCTIONS	90% SCHURWOLLE / NEW WOOL, KAMMGARN / GABARDINE, 10% NYLON / NYLON 80.000 MARTINDALE TYP 5-7, ISO 1-8 EN 1021-1/2, DIN 4102, B2 1400 MM (55 1/8 INCH) 880 GR
SUNNIVA* (D)	QUALITÄT / CONTENT SCHEUERFESTIGKEIT / RUB RESISTANCE LICHTTECHTHEIT / FASTNESS TO LIGHT FLAMMSCHUTZ / FLAME RESISTANCE BREITE / WIDTH GEWICHT PRO QM / WEIGHT PER SQM PFLEGEANLEITUNG / CARE INSTRUCTIONS	58% SCHURWOLLE / NEW WOOL, 25% VISKOSE / VISCOSE, 8% LEINEN / LINEN, 5% NYLON / NYLON, 4% POLYESTER / POLYESTER 50.000 MARTINDALE TYP 5-6 EN 1021-1/2 1400 MM (55 1/8 INCH) 590 GR
TONICA* (D)	QUALITÄT / CONTENT SCHEUERFESTIGKEIT / RUB RESISTANCE LICHTTECHTHEIT / FASTNESS TO LIGHT FLAMMSCHUTZ / FLAME RESISTANCE BREITE / WIDTH GEWICHT PRO QM / WEIGHT PER SQM PFLEGEANLEITUNG / CARE INSTRUCTIONS	100% SCHURWOLLE / NEW WOOL 45.000 MARTINDALE TYP 5-7, ISO 105-B02 EN 1021-1/2, BS 5852, DIN 4102 B2 1400 MM (55 1/8 INCH) 700 GR
TONUS^{3,4} (D)	QUALITÄT / CONTENT SCHEUERFESTIGKEIT / RUB RESISTANCE LICHTTECHTHEIT / FASTNESS TO LIGHT FLAMMSCHUTZ / FLAME RESISTANCE BREITE / WIDTH GEWICHT PRO QM / WEIGHT PER SQM PFLEGEANLEITUNG / CARE INSTRUCTIONS	90% SCHURWOLLE / NEW WOOL, 10% HELANCA / HELANCA 50.000 MARTINDALE TYP 5-7, ISO 1-8 EN 1021-1/2 1300 MM (51 1/8 INCH) 635 GR
VIDAR* (D)	QUALITÄT / CONTENT SCHEUERFESTIGKEIT / RUB RESISTANCE LICHTTECHTHEIT / FASTNESS TO LIGHT FLAMMSCHUTZ / FLAME RESISTANCE BREITE / WIDTH GEWICHT / WEIGHT PFLEGEANLEITUNG / CARE INSTRUCTIONS	94% SCHURWOLLE / NEW WOOL, 6% POLYAMID / POLYAMIDE 100.000 MARTINDALE TYP 6-7, ISO 105-B02 EN 1021-1/2, BS 5852 1400 MM (55 1/8 INCH) 765 GR
ZANZIBAR (E)	QUALITÄT / CONTENT SCHEUERFESTIGKEIT / RUB RESISTANCE LICHTTECHTHEIT / FASTNESS TO LIGHT FLAMMSCHUTZ / FLAME RESISTANCE BREITE / WIDTH GEWICHT PRO QM / WEIGHT PER SQM PFLEGEANLEITUNG / CARE INSTRUCTIONS	100% MOHAIR / MOHAIR, BASIS: BAUMWOLLE / BASE: COTTON 100.000 WYZENBEECK HELLE FARBE / LIGHT COLOURS: TYP 4-5, DUNKLE FARBE / DARK COLOURS: TYP 5-6 EN 1021-1/2 1400 MM (55 INCH) 805 GR

POLSTERLEDER (STOFFGRUPPEN) / UPHOLSTERY LEATHER (FABRIC GROUPS)

SELECT (E) RINDSLEDER, SEMI-ANILIN, PIGMENTIERT, LEICHT GEFÄRBT / COW'S LEATHER, SEMI-ANILINE, PIGMENTED, GENTLY EMBOSSED

**VELOURLEDER /
SUEDE (E)** RINDSPALTKERNSTÜCK, ANILIN-GEFÄRBT, GESCHLIFFEN / SUEDE, ANILINE DYED, BRUSHED

RANCHERO (F) RINDSLEDER, REIN-ANILIN, ANILIN-GEFÄRBT / COW'S LEATHER, PURE ANILINE, ANILINE DYED

Für die Produkte aus Leder werden ganze Rinderhäute verwendet. Die Merkmale dieses besonderen Materials wie Nacken- und Rückenfallen, Insektenstiche oder kleine Verletzungen sind Zeichen der Authentizität und machen jedes Möbel sichtbar zu einem Unikat. /

For our leather products, we use whole skin hides. Natural markings such as creases, scratches or minor blemishes are signs of quality and authenticity, which identify each furniture item as unique.